

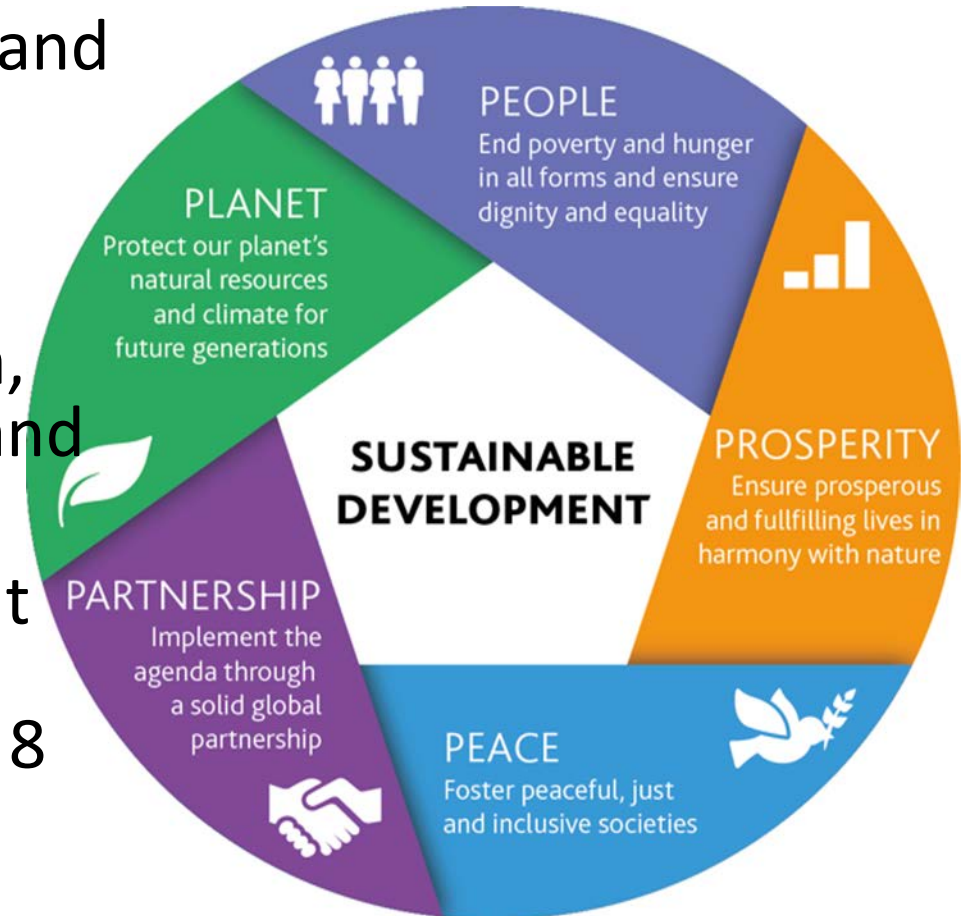
MALDIVES PARTNERSHIP LANDSCAPE ASSESSMENT

Advancing partnerships to support SDGs in Maldives—Online Workshop
2 November 2020



Partnership Assessment Methodology

- People covers health, education, gender and inequalities (goals 3,4,5 and 10)
- Planet covers clean water, energy, sustainable cities and communities, responsible consumption and production, climate action, life below water, life on land (goals 6,7, 11, 12, 13, 14 and 15)
- Prosperity covers poverty, hunger, decent work and economic growth, industry, innovation and infrastructure (goals 1, 2 8 and 9)
- Peace covers peace, justice and strong institutions (goal 16)



Summary of assessment

Methodology:

- Desk review available documents, consultations with Government SDG focal points, CSOs, UN agencies

Findings:

- Government support limited – low capacity; no formal mechanism
- Limited partnerships with most of the stakeholders (Government, CSOs & Developmental partners)
- Very few partnerships with private sector, academia and media



Potential areas for partnerships--People

Mental Health

- Partners – MoH, HPA, Center for Mental Health (CMH-IGMH), MRC, Health care providers (public and private), Psychology and counselling services, MoGFSS, Family and child protection services, State care institutions, NDA, MoE, schools and universities, CSOs (working with youth, PWDs, drug users, elderly), Media, Academia and Development Partners (UN agencies).
- High need to provide quality mental health services
- Supply is in short of demand – specially given COVID-19 pandemic
- Networking and collaboration initiated – MHPSS cluster—pandemic response
- This is corroborated from the input received from all stakeholder consultations



Potential areas for partnerships--Planet

Safe Water

- Partners –Utilities (MWSC, STELCO, FENAKA), Water infrastructure development companies, MoFMRA, farmers, Resorts and Guest houses, Water Standards departments in Gov (MoEnv,EPA), MoE (school water and sanitation), water quality assurance HPA, MFDA), NBS-water Statistics, local government, CSOs, IWDCs, academia.
- Need is high for sustainability for IWRM projects- SAP priority area
- Networking initiated through GCF water project
- This is corroborated from the input received from all stakeholder consultations



Potential areas for partnerships--Prosperity

Occupational Health and Safety

- Partners – Regulatory institutions of the Government (MED, MoT, MoFMRA, MoTCA, MoH), Employers (public/private), Media, Parliament, Independent Institutions (HRCM, CSC), Developmental Partners (UN agencies—ILO, IOM), MRC, MNDF (Fire and rescue), MPS, Transport service providers (MTCC), Construction companies, CSOs (professional worker associations), health care providers, and academia.
- Neglected and high opportunity cost to society
- Recent accidents and pandemic highlighted the need to address the need for decent and safe work environments
- This is corroborated from the input received from key stakeholders



Potential areas for partnerships--Peace

Anti-corruption

- Partners – Policy and Regulatory institutions of the Government (PO, MoF, MED, Audit Office, PGO), Employers (public/private), SoEs, Media, Parliament, Independent Institutions (ACC, HRCM, CSC), Customs, Air and Sea Ports, Police, Immigration Financial Institutions (Banks), Judiciary, academia, CSOs, Developmental Partners (UN agencies, WB)
- Risks, lack of trust in institutions, and volatile environment that results in high opportunity cost to society
- This is corroborated from the input received from all stakeholder consultations
- Way forward – needs more clarity –risks high –potential and importance high



Partnership acceleration for SDGs

- Need champions as accelerators for partnerships
- Need mechanisms and support for durable partnerships
- Whole of government, whole of society for success in SDGs

